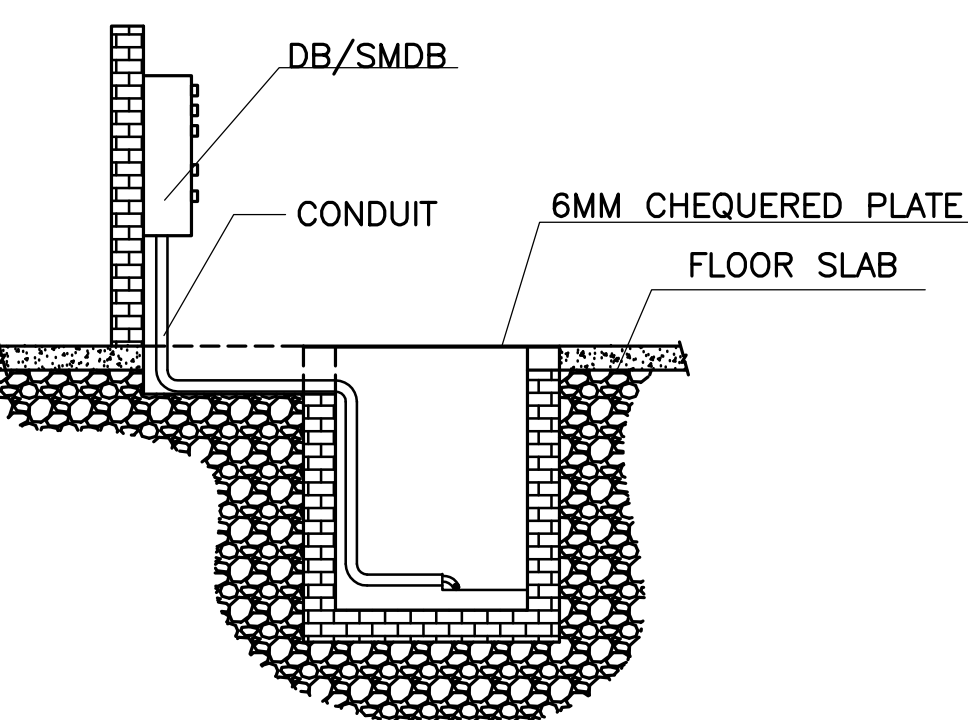
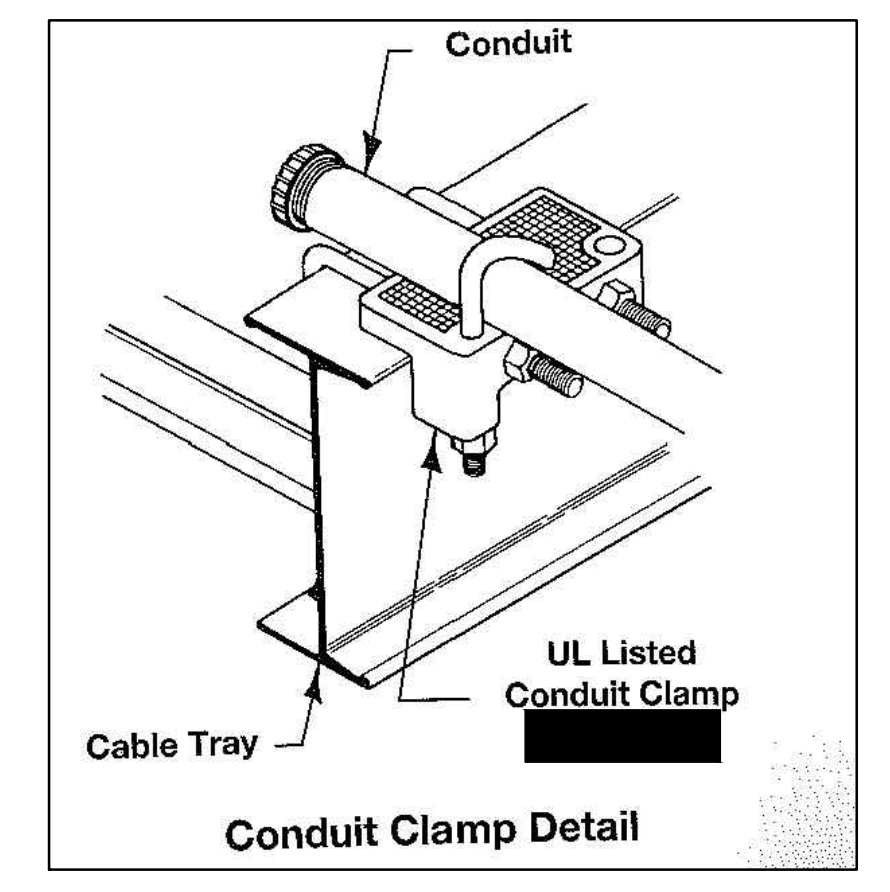


Cable Schedule of Primary Cables, considering Aluminum Conductor, Unarmored cables.

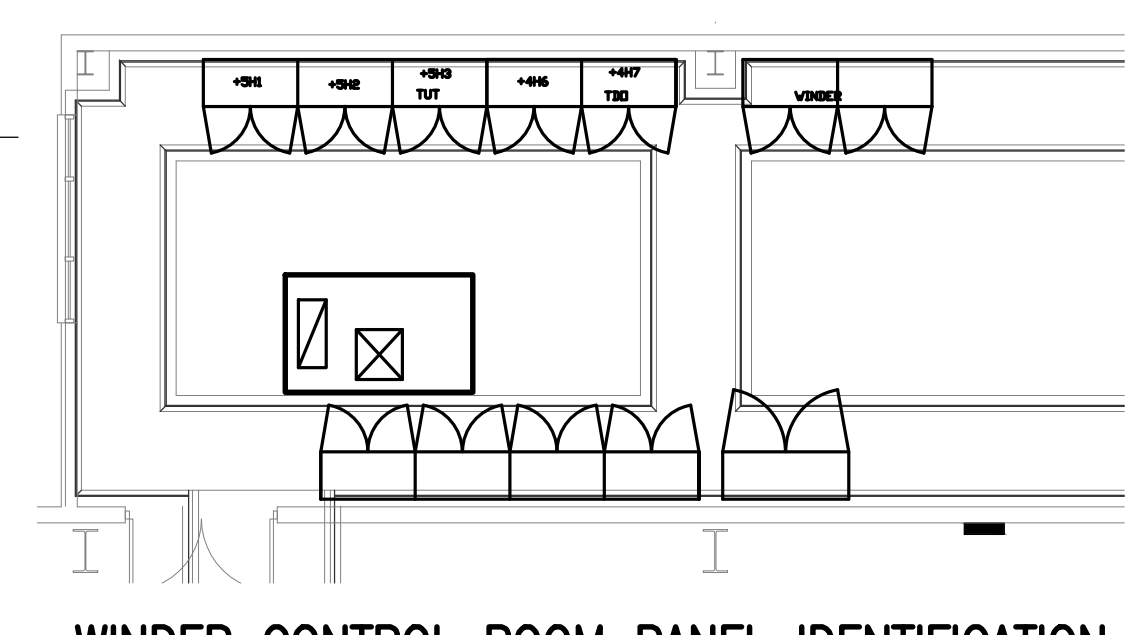
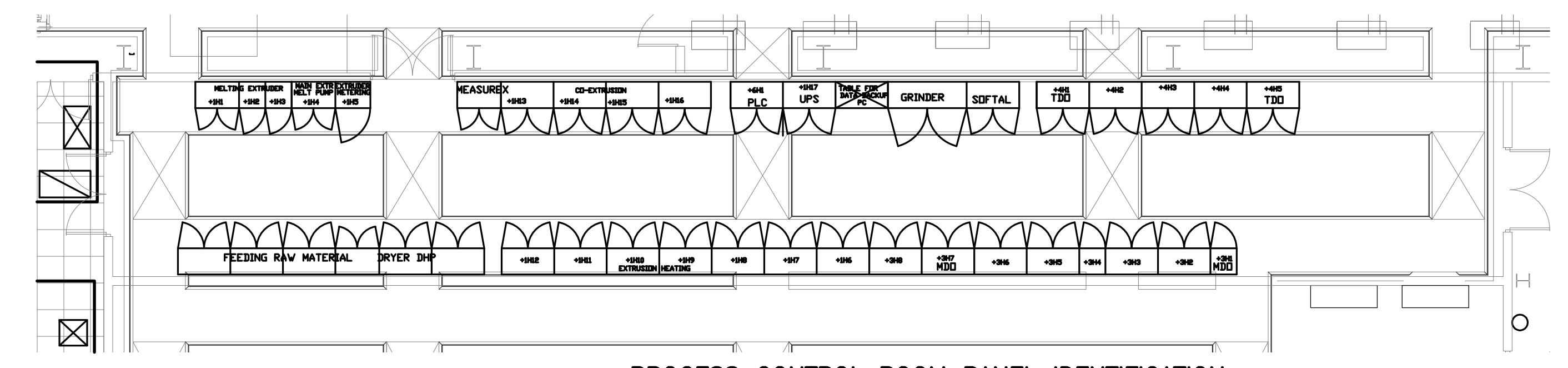
Sr.No	From	TO
1	LV Panel-1	MIX Auto Flex Panel (Ground Conductor)
2	LV Panel-1	MIX Auto Flex Panel (Location in Control Panels Room)
3	LV Panel-1	Winder (Location in Winder Panels Room)
4	LV Panel-1	Feeding panel (DHP) (Location in Control Panels Room)
5	LV Panel-1	PRS (TUT) Location in Winder Panels Room)
6	LV Panel-1	Edge Trim Grinder (SILO ALPINE) Location winder panels room
7	LV Panel-1	Extruder Heating # 1 (Location in Control Panels Room)
8	LV Panel-1	Main Extruder drive # 1&2 (1H1) Location in Control Panels Room)
9	LV Panel-1	Capacitor Bank (Location in LV Panels Room)
10	LV Panel-2	CO Extruder Drive+Heaters (1H13) (Ground Conductor) Location in Control Panels Room)
11	LV Panel-2	CO Extruder Drive+Heaters (1H13)
12	LV Panel-2	FRCD(Main) Dryer (DHP) Location in Control Panels Room)
13	LV Panel-2	TDO (4H4) Location in Control Panels Room)
14	LV Panel-2	Metering Extruder Drive (1H4) (Location in Control Panels Room)
15	LV Panel-2	Capacitor Bank (Location in LV Panels Room)
16	LV Panel-3	Extruder Heating # 2 (1H10) Location in Control Panels Room)
17	LV Panel-3	Extruder Heating # 3 (1H17) (Location in Control Panels Room)
18	LV Panel-3	Primary Silter (Ground Conductor) (Location Between Grid 24-25 at Axis H-H)
19	LV Panel-3	Primary Silter (Location Between Grid 24-25 at Axis H-H)
20	LV Panel-3	Cast Film Grinder (Location in Control Panels Room)
21	LV Panel-3	Film Grinder (3 MT TDO GRINDER) (Location in Winder Panels Room)
22	LV Panel-3	Casting/ROD/Coater (3H7) Location in Control Panels Room)
23	LV Panel-3	TDO Drive +Blowers (4H6) (Location in Winder Panels Room)
24	LV Panel-3	Capacitor Bank (Location in Control Panels Room)
25	LV Panel-4	Re-granulation (ERREMA) (Room P-121, Location At Axis D-E, Grid 18-19)
26	LV Panel-4	Metelizer (Location Axis K between Grid 26-29)
27	LV Panel-4	Capacitor Bank (Location in LV Panels Room)
28	LV Panel-4	SMDB Filter (Location in Filter room) ground conductor
29	LV Panel-4	SMDB Filter (Location in Filter room)
30	LV Panel-4	Capacitor Bank (Location in LV Panels Room)
31	SMDB FILTER	Bubble Tester (Location in Filter Room)
32	SMDB FILTER	Crane Filter Room (Location in Filter Room)
33	SMDB FILTER	DRYING UNIT (Location in Filter Room)
34	SMDB FILTER	MULTIWASH LINE (Location in Filter Room)
35	SMDB FILTER	HYPOX UNIT (Location in Filter Room)
36	SMDB LL-1	Crane MDO+TDO (Location At Axis K near Control Room)
37	SMDB LL-1	Coating MCC (Location in 1 coating Room P-133)
38	SMDB LL-1	Crane Packing # 1 (Location at Axis G in Room P-109)
39	SMDB LL-1	Crane Packing # 2 (Location at Axis G in Room P-109)
40	SMDB LL-1	Core Cutting Machine-1 (Location in Paper Core Storage P-107)
41	SMDB LL-1	Pump Metelizer (Room P-105)
42	SMDB LL-1	Secondary Silter-1 G Conductor (Location between Grid 27-28 at Axis G-H)
43	SMDB LL-1	Secondary Silter-1 (Location between Grid 27-28 at Axis G-H)
44	SMDB LL-1	Secondary Silter-2 (Location between Grid 29-30 at Axis G-H)
45	SMDB LL-1	Secondary Silter-2 (Location between Grid 29-30 at Axis G-H)
46	SMDB LL-1	Crane # Metelizer+Silter+Winder (Location At Axis K near lift)
47	SMDB LL-1	Conveyors Silter (Location At Axis -G, between Grid 24-25)

CABLE TRAY PATH SCHEDULE

ROOM	RUNS	1	5	3	1	3	2	5
MAIN CONTROL ROOM	TYPE	TRIPLEX	TRIPLEX	TRIPLEX	QUAD	TRIPLEX	TRIPLEX	TRIPLEX
	WIRE SIZE	3X250	3X500	3X500	4X4	3X300	3X3/0	3X500
	GROUND	1X3 G	1X250 G	1X2/0 G	1X8 G	1X1/0 G	1X3 G	1X250 G
WINDER CONTROL ROOM	RUNS	3	3	3	5			
	TYPE	TRIPLEX	TRIPLEX	QUAD	TRIPLEX			
	WIRE SIZE	3X300	3X300	3X300	3X500			
SMDB-1	RUNS	2						
	TYPE	TRIPLEX						
	WIRE SIZE	3X3/0						
SMDB-2	RUNS	2						
	TYPE	TRIPLEX						
	WIRE SIZE	3X3/0						
SMDB-3	RUNS	2						
	TYPE	TRIPLEX						
	WIRE SIZE	3X4/0						
SMDB-FILTER	RUNS	2						
	TYPE	TRIPLEX						
	WIRE SIZE	3X3/0						
SECONDARY SPLITTERS	RUNS	1						
	TYPE	TRIPLEX						
	WIRE SIZE	3X3/0						
MCC COATING	RUNS	1						
	TYPE	TRIPLEX						
	WIRE SIZE	3X4						
ERMA	RUNS	3						
	TYPE	TRIPLEX						
	WIRE SIZE	3X500						
METELIZER	RUNS	4						
	TYPE	TRIPLEX						
	WIRE SIZE	3X500						



CABLE TRAY LAYOUT A
SCALE: 1=1/16"



GENERAL NOTES:

- MULTI-CONDUCTOR CABLES 4/0 AND LARGER MUST BE PLACED IN A SINGLE LAYER.
 - VERTICAL TRAY RUNS MUST BE COVERED.
 - WIRING IN TRAY TO BE TYPE TC, XHHW, COPPER.
 - WIRING SMALLER THAN 4/0 MUST BE SEPARATED BY A DIVIDER IN THE CABLE TRAY.
- ROUTE CABLES THROUGH MINIMUM 2-2" CONDUIT AND OVERHEAD TO SMDB FILTER. SEE DETAIL B FOR CABLE TRAY TO CONDUIT CONNECTION.
 - ROUTE CABLE INTO MINIMUM 1" CONDUIT. TAKE CONDUIT OVERHEAD TO PANEL. SEE DETAIL B FOR CABLE TRAY TO CONDUIT CONNECTION.
 - ROUTE CABLE THROUGH MINIMUM 2-2" CONDUIT AND STUB UP TO SMDB-1. SEE DETAIL B FOR CABLE TRAY TO CONDUIT CONNECTION.
 - ROUTE CABLE THROUGH MINIMUM 2-2" CONDUIT AND TAKE OVERHEAD TO SMDB-2. SEE DETAIL B FOR CABLE TRAY TO CONDUIT CONNECTION.
 - ROUTE COMPRESSOR AND DRYER CABLES THROUGH THIS MAN HOLE. MUST BE ROUTED THROUGH MINIMUM SIZE OF 2-2.5" CONDUITS.
 - SEE DETAIL B FOR CONDUIT CONNECTION TO TRAY.
 - SECTION OF TRENCH TO CONTAIN 100MM TRAY AT TOP AND 18" TRAY AT THE BOTTOM.

SHEET NOTES:

- ROUTE CABLES THROUGH MINIMUM 2-2" CONDUIT AND OVERHEAD TO SMDB FILTER. SEE DETAIL B FOR CABLE TRAY TO CONDUIT CONNECTION.
- ROUTE CABLE INTO MINIMUM 1" CONDUIT. TAKE CONDUIT OVERHEAD TO PANEL. SEE DETAIL B FOR CABLE TRAY TO CONDUIT CONNECTION.
- ROUTE CABLE THROUGH MINIMUM 2-2" CONDUIT AND STUB UP TO SMDB-1. SEE DETAIL B FOR CABLE TRAY TO CONDUIT CONNECTION.
- ROUTE CABLE THROUGH MINIMUM 2-2" CONDUIT AND TAKE OVERHEAD TO SMDB-2. SEE DETAIL B FOR CABLE TRAY TO CONDUIT CONNECTION.
- ROUTE COMPRESSOR AND DRYER CABLES THROUGH THIS MAN HOLE. MUST BE ROUTED THROUGH MINIMUM SIZE OF 2-2.5" CONDUITS.
- SEE DETAIL B FOR CONDUIT CONNECTION TO TRAY.
- SECTION OF TRENCH TO CONTAIN 100MM TRAY AT TOP AND 18" TRAY AT THE BOTTOM.

AA
ANNE FROBER-ANDERSON INC.
1221 NORTH BLACK BRANCH ROAD
ELIZABETHTOWN, KENTUCKY 42702
PHONE: (859) 223-5684
FAX: (859) 223-2607
WWW.MSEARCH.COM

FLEX

FLEXFILMS, U.S.A., LLC
1221 NORTH BLACK BRANCH ROAD
ELIZABETHTOWN, KENTUCKY 42702
PROJECT L-12 BOPET U.S.A.

DATE	REVISION	BY	DATE	REVISION	BY
NOV 11	VALUE ENGINEERING RE-DESIGN DOCUMENT				

PROJECT NO. 8529-02
DESIGNED BY LE
DRAWN BY LE
CHECKED BY TBW
REVIEWED BY SHT
DATE: JULY 2011
SCALE: AS NOTED

MSE
OF KENTUCKY, INC.
624 Washington Way
Lexington, KY 40503
www.msear.com

Engineers
Architects
Planners

UFL-L12
E-011A

DRAWING NO.